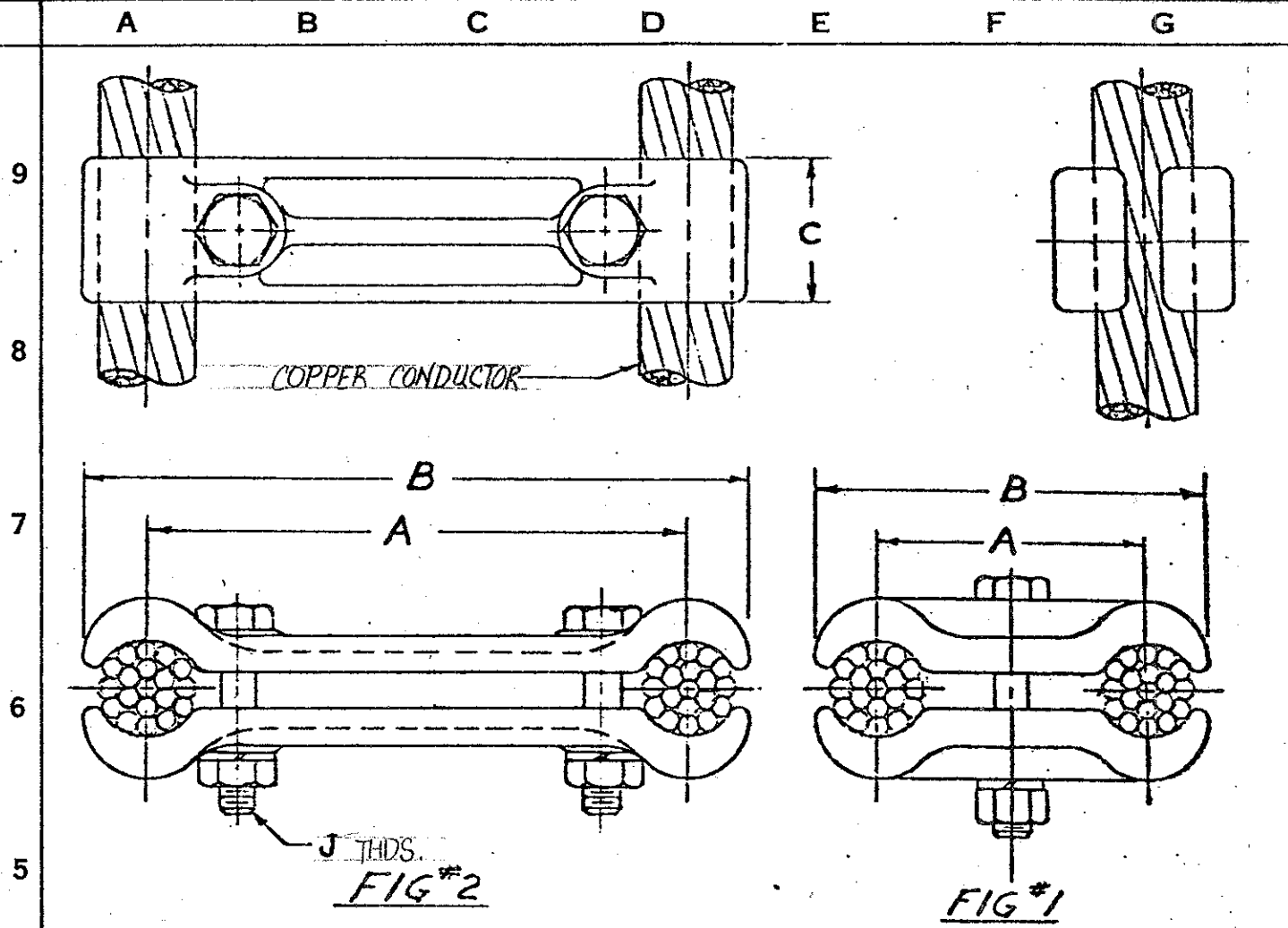


REVISIONS		NO.	DATE	NO.	DESCRIPTION	BY
1		1	10-31-83	1	CAT. NO. WAS C-6853 AND DWG. # WAS C-6853	HDY
2		2	3-23-84	2	ADD - BPCS-050-6	HDY
ICR NO.		3730				



NOTES:
 1. MATERIALS - CASTINGS: 255 ELECTRICAL BRONZE ALLOY
 BOLTS: SILICON BRONZE ALLOY
 NUTS: SILICON BRONZE ALLOY
 LOCKWASHERS: SILICON BRONZE ALLOY

CATALOG NO.	FIG.	COPPER CONDUCTOR	DECIMAL RANGE	NO. BOLTS	DIMENSIONS IN INCHES			
					A	B	C	J
BPCS-100-6	2	750-1000 MCM	.998"-1.152"	2	6	7 ³ / ₄	2	1/2
BPCS-080-8	2	500-800 MCM	.811"-1.031"	2	8	9 ¹ / ₂	2	1/2
BPCS-080-6	2	500-800 MCM	.811"-1.031"	2	6	7 ¹ / ₂	2	1/2
BPCS-080-12	2	500-800 MCM	.811"-1.031"	2	12	13 ¹ / ₂	2	1/2
BPCS-080-4	2	500-800 MCM	.811"-1.031"	2	4	5 ¹ / ₂	2	1/2
BPCS-100-8	2	750-1000 MCM	.998"-1.152"	2	8	9 ³ / ₄	2	1/2
BPCS-150-8	2	1000-1500 MCM	1.152"-1.412"	2	8	10 ¹ / ₄	2	1/2
BPCS-025-10	2	4/0 SOL-250 MCM	.460"-.575"	2	10	11	2	1/2
BPCS-050-10	2	250-500 MCM	.574"-.813"	2	10	11 ¹ / ₈	2	1/2
BPCS-100-2 ¹ / ₂	1	750-1000 MCM	.998"-1.152"	1	2 ¹ / ₂	4 ¹ / ₂	2	1/2
BPCS-050-6	2	250-500 MCM	.574"-.813"	2	6	7 ¹ / ₈	2	1/2

MR-3412-98

R/G:2

DATE 10-31-83
 DWN BY HDY CKD BY RH
 APPROVED [Signature]
 SCALE DO NOT

BRONZE CABLE SPACER
 FOR BUNDLED COPPER
 CONDUCTORS

ANDERSON
 ELECTRICAL CONNECTORS
 SQUARE D COMPANY
 LEEDS ALABAMA

CAT. NO. BPCS-(PER TAB) DWG. NO. C-12901